

**DYMO®****DYMO® LabelWriter®**

450 Turbo

High-Speed Label and Postage Printer



# Label faster. Mail smarter. Look sharp.

## LabelWriter® 450 Turbo Features:

- 1 Eliminate the hassle of printing sheet labels through a desktop printer.
- 2 Fast. Prints up to up to 71 labels per minute.\*
- 3 Prints USPS®-approved postage in seconds with DYMO Stamps®. Pay as you go with no monthly fee and no contract commitments.\*\*
- 4 No expensive ink or toner. Ever.
- 5 Sleek, compact design fits in any modern workplace.

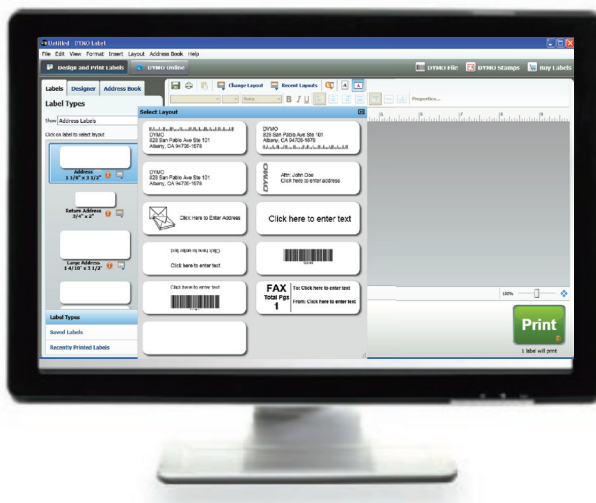
### Package Includes:

- LabelWriter® 450 Turbo
- Software
- USB Cable
- Cleaning Card
- AC Power Adapter
- User Guide
- Quick Start Guide
- Starter rolls of labels



## DYMO® Productivity Software

- 1 **DYMO Label™**. Select from over 60 label layouts, then customize with your company logo or graphics.
- 2 **Multi-application**. Print labels from within Microsoft® Word or Outlook®, Mac® Address Book, QuickBooks® and other programs
- 3 **QuickPrint**. Print a single label fast and easy, whenever you want.
- 4 **DYMO Stamps®**. Print USPS®-approved postage directly from your desktop with no monthly fee.\*\*



- 5 **Address Fixer™**. Check and correct addresses. You can also verify ZIP+4® codes.\*\*\*
- 6 **DYMO File® LT**. Easily convert stacks of paper documents into PDFs and other digital files.\*\*\*\*
- 7 **PC or Mac®**. Works with Windows® XP or Windows Vista® (32-bit, 64-bit) or Mac OS® v10.4 or later.

\* 4-Line address label

\*\* Internet connection required. DYMO Stamps® service provided by Endicia, a licensed USPS® PC Postage™ provider. Account terms are subject to change. For current information visit [www.dymo.com/endicia](http://www.dymo.com/endicia).

\*\*\* Internet connection required

\*\*\*\* Windows only; requires scanner with document feeder. Scans up to a maximum of 200 pages per month.